

Part : 102M3

# Specifications



**151** lm/W  
Max. Energy efficiency

**2827** lm/m

**19.2W/m**

Max.Length: **5m**  
only one side powered



**ENERGY**  
SUPPLIER'S NAME  
MODEL IDENTIFIER

A  
B  
C  
D  
E  
F  
G

**D**

WXYZ  
kWh/1000h

QR Code

**112LEDs/m DC24V 10mm(FPC) SMD2835  
CCT LED Light Strips**

# 112LEDs/m DC24V 10mm(FPC) SMD2835 CCT LED Strips

## DL-F28A56V24-102M3-\*



1. Strong pure copper LED frame, and diameter > 1mm, 99.9%-purity gold wire encapsulation, can reduce damage to the LED in different applications.
2. >50000h lifespan normal CCT tunnable LED strip is outfitted with extremely bright LED chips and strong adhesive backing. Special heat resistant PCB layout, copper layer 3Oz that make sure lower voltage drop and excellent heat dissipation.
- 3.3 SDCM one BIN only, these strips are great for providing elegant and discreet lighting.
4. The flexible design of LED strips allows for bright lighting almost any space you can imagine, which is quite suitable for back lighting and general lighting in aluminum frames or under cabinet, and is commonly used by architects and lighting designers in professional installations.

## Dimensions

**Length:** 5M(16.4')/roll

**Cutting unit:** 14LEDs/125mm(4.921")

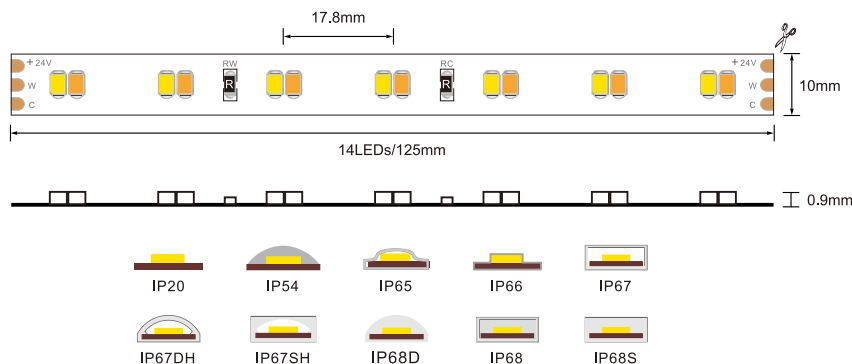
**LED spacing:** 17.8mm(0.700")

**LED height:** 0.9mm(0.035")

**Min. bend diameter:** Φ60mm(2.362")

**Mounting:** 3M tape

**IP Rate:** IP20/IP54/IP65/IP66/IP67/IP68



## Product Parameters

LEDs Q'ty/m	112	Input Voltage:	DC24V	Lifetime:	50000h
		Input Current:	0.8A/1m&3.4A/5m	On-off times:	10000 ( test times )
SMD Type	2835	Standard Power:	19.2W/m	Standard Package:	5M/roll
		Power option :	9.6 / 11.5 / 15.36W	Operating humidity:	40%-70%RH
		Dimension:	5000*10*0.9mm	Operating temperature:	Ta: -25~40°C, Tc: 75°C(max)

## Photo-electric Parameters

Data is subject to actual measurement based on SMD 2835 LED CRI>80

Power	Colour	CCT	Lumen/M	Lumen/W	Energy Efficiency Class
9.6W/m	Warm White	2700K	1418	149	D
9.6W/m	Pure White	6500K	1529	161	C
19.2W/m	Warm+Pure White	4000K	2827	151	D

1. CRI>90&CRI>95 available.
2. The tolerance of output data is ±10%.
3. The above data is based on IP20 ,one meter.

# 112LEDs/m DC24V 10mm(FPC) SMD2835 CCT LED Strips

## Product Coding Method

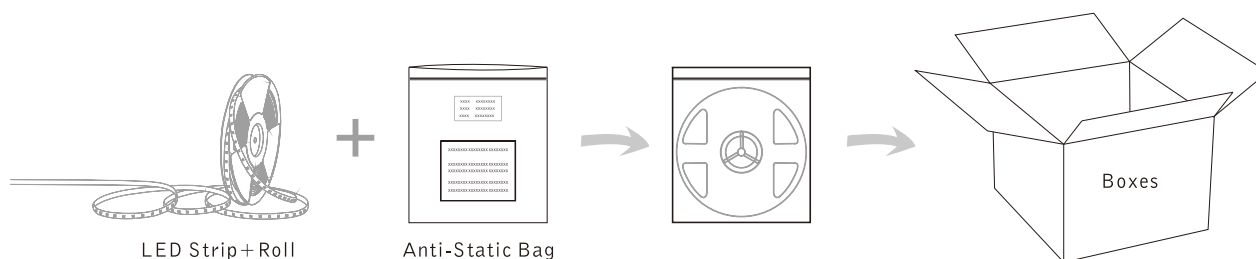
**DL- F 28 A 56 V24 - 102M3 - Z**

①      ②    ③    ④    ⑤      ⑥                  ⑦                  ⑧

① Model: **DENO Lighting**

② Category	③ LED Type	④ IP Rate	⑤ LEDs/0.5m	⑥ Input Voltage	⑦ Number	⑧ Special Order NO
F Flex LED Strips	28 2835SMD	A IP20	56 112LED/m	V24 DC24V	102M3 Product number	10 PCB Width
		C IP54				CV Constant Voltage
		D IP65				.....
		E IP66				.....
		.....				.....

## Packaging Information



## Note

### How to recognise an environmentally friendly LED strip for European legislation?

The new series of environmentally friendly LED strips proposed by Deno Lighting meet the characteristics required by the regulations and will have a specific energy label. The current classification ranges from A++ (most efficient value) to E (least efficient value) while the classification with new parameters will range from A (most efficient value) to G (least efficient value); the new labels will therefore provide information on energy consumption, expressed in kWh per 1,000 hours, and will have a QR code to display more information. The EcoDesign guidelines will make it easier for you to implement this regulation within your own reality and to help you understand the scope of this change.